



Pinelands Regional School District

Junior & Senior High School **Weekly Renovation Updates**

Overall Project:

Senior High School - Masonry Restoration

- Continued installation of exterior masonry ó D & C-Wing (south & east elev.) walls
- Continued installation of exterior wall preparation ó steel (installation/cleaning/painting), masonry surface preparation and installation of vapor barrier system
- Continued roof coping modifications
- Continued exterior masonry demolition ó A Wing (south elev.)
- Continued installation of exterior windows & doors (D Wing)
- Completed installation of new front elevation signage & logo

Senior & Junior High School - Renovations

- Continued selective interior renovations ó (Sr. High School)
- Continued bathroom renovations ó plumbing rough-in, wall framing (Sr. High School)
- Continued HVAC & electrical system renovations (Sr. High School)
- Continued masonry & framing for new Gym entrance canopy (Sr. High School)
- Continued electrical system renovations ó 2nd shift work (Jr. High School)
- Continued review of existing above ceiling conditions óHVAC ductwork shop-drawingsö (2nd Floor) (Jr. High School)
- Completed installation of new scoreboard ö Protection Guardö (Jr. High School)

Senior & Junior High School – Paving & Site Improvements (Summer 2019)

- Construction Plans & Specification óBids > submitted and reviewing

Scheduled Activities for the week of February 18 2019 thru February 22 2019

Overall Project:

Senior High School - Masonry Restoration

- Continued layout / modification for new exterior window / door opening (A & C Wing)
- Continue installation of exterior wall preparation ó steel (installation/cleaning/painting), masonry surface preparation
- Continue installation of exterior masonry ó Auditorium (south wall elev.)
- Continue roof coping modifications
- Continue exterior masonry demolition ó A Wing (south wall elev.)
- Continue installation of new exterior windows & doors (D Wing)

Senior & Junior High School - Renovations

- Continue layout & installation of HVAC ductwork (Sr. High School)
- Continue plumbing rough-in / framing / finishes for bathroom renovations (Sr. High School)
- Continue layout / installation for new Main Entrance & Exterior Canopy (Sr. High School)
- Continue electrical system modifications (Sr. High School)
- Continue layout / installation for classroom partition walls (Sr. High School)
- Continue selective electrical renovations & bathroom ceramic tile flooring ó 2nd shift work (Jr. High School)
- Continue progressing LEHT Building Dept. Inspections

Senior & Junior High School – Paving & Site Improvements (Summer 2019)

- Construction Bid - Review

Epic Management, Inc.



Pinelands Regional Sr. High School 6 New Exterior Signage



Pinelands Regional Sr. High School 6 Exterior Masonry/Windows/Doors- Installation (Front Elevation)



Pinelands Regional Sr. High School 6 Exterior Masonry Installation (Main Entrance)



Pinelands Regional Sr. High School 6 Exterior Masonry & Windows / Doors (D-Wing East 6 Auto Shop)



Pinelands Regional Sr. High School 6 Exterior Masonry Installation (West D-Block & Auditorium)



Pinelands Regional Sr. High School 6 Exterior Wall Reconstruction & Preparation (C Block East)



Pinelands Regional Sr. High School 6 Exterior Masonry Reconstruction & Preparation (C Block - Cafeteria)



Pinelands Regional Sr. High School 6 Exterior Masonry Reconstruction & Preparation (C Block 6 Media Center)



Pinelands Regional Sr. High School 6 Exterior Masonry Facia Demolition & Preparation (A Block - South)



Pinelands Regional Sr. High School 6 Exterior Masonry Preparation (A Block - West)



Pinelands Regional Sr. High School 6 Corridor HVAC Ductwork (D-Block)



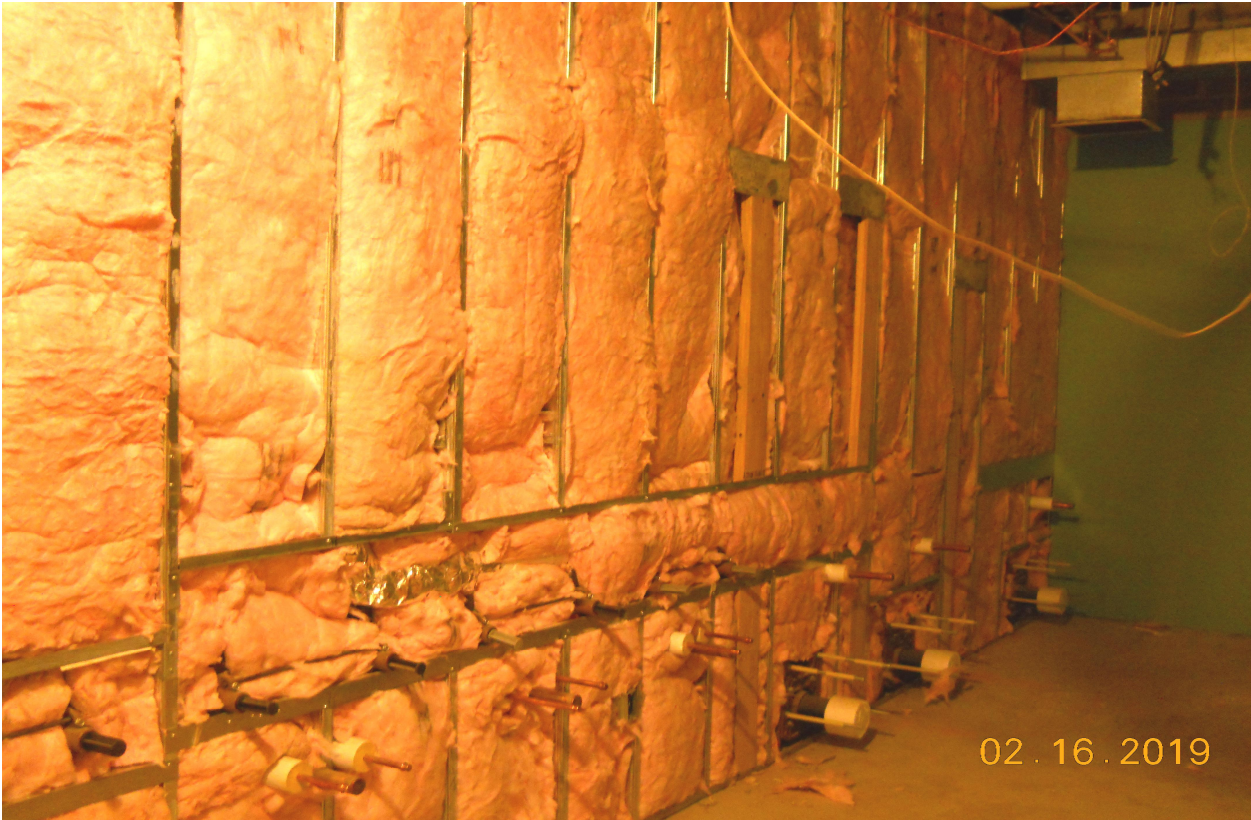
Pinelands Regional Sr. High School 6HVAC Ductwork 6Graphic8 Classroom6 (D-Block)



Pinelands Regional Sr. High School ó HVAC Unit óArt Classroomö (D-Block)



Pinelands Regional Sr. High School óBathroom Plumbing /Framing / Insulation (A Block North ó 1st Floor)



Pinelands Regional Sr. High School 6 Bathroom 6 Wall Insulation (A Block North 6 1st Floor)



Pinelands Regional Jr. High School 6 Gym Scoreboard Protection Guard