



11/3/2018



Pinelands Regional School District

Junior & Senior High School Weekly Renovation Updates

Overall Project:

Senior High School - Masonry Restoration

- Continued layout / modification for new exterior window / door opening
- Continued installation of Temporary exterior walls
- Continued installation of exterior masonry ó Gym Area; commenced layout for D-Wing block (east) wall installation
- Continued installation of exterior wall preparation ó steel (installation/cleaning/painting), masonry surface preparation and installation of vapor barrier system
- Continued demolition of exterior wall fascia - D-Wing, Auditorium, A-Wing

Senior & Junior High School - Renovations

- Continued selective interior renovations ó (Sr. High School)
- Continued bathroom renovations ó plumbing rough-in (Sr. High School)
- Continued HVAC & Electrical system renovations (Sr. High School)
- Continued bathroom renovation ó 2nd shift work (1st and 2nd Floor) (Jr. High School)
- Completed concrete floor slab restoration ó bathroom renovations (Jr. & Sr. High Schools)
- Commenced installation of HVAC Unit curbs for Gym

Senior High School - Athletic Field Renovations

- Completed installation of Scoreboard Support Columns (Athletic Field)
- Commence installation Running Track Surface (Athletic Field)

Scheduled Activities for the week of November 05 2018 thru November 09 2018

Overall Project:

Senior High School - Masonry Restoration

- Continue removal of exterior brick fascia, windows and doors (A-Wing)
- Continued layout / modification for new exterior window / door opening
- Continue installation of exterior wall preparation ó steel (installation/cleaning/painting), masonry surface preparation
- Continue installation of Temporary exterior walls
- Continue installation of exterior masonry ó Gym Area & D Wing

Senior & Junior High School - Renovations

- Continue layout & installation of HVAC ductwork (Sr. High School)
- Continue plumbing rough-in for bathroom renovations (Sr. High School)
- Continue layout & excavation for new Main Entrance & Exterior Canopy (Sr. High School)
- Continue Electrical system modifications (Sr. High School)
- Continue selective bathroom renovations ó 2nd shift work (Jr. High School)
- Continue layout / installation of roof curbing for Gym HVAC Units

Senior High School - Athletic Field Renovations

- Athletic Field ó Continue site concrete, fencing installation and asphalt walkway
- Athletic Field ó Continue Scoreboard installation
- Athletic Field ó Continue installation of Track Surface / Lines

Epic Management, Inc.

Page 1 of 10



Pinelands Regional Sr. High School 6 Exterior Masonry Waterproofing / Brick Veneer Installation



Pinelands Regional Sr. High School 6 Exterior Masonry Waterproofing / Brick Veneer Installation



Pinelands Regional Sr. High School 6 Exterior Masonry Waterproofing / Brick Veneer Installation



Pinelands Regional Sr. High School 6 Exterior Masonry Waterproofing / Brick Veneer Installation



Pinelands Regional Sr. High School 6 Exterior Masonry Waterproofing / Brick Veneer Installation



Pinelands Regional Sr. High School 6 Exterior Masonry Facia Demolition A-Wing West



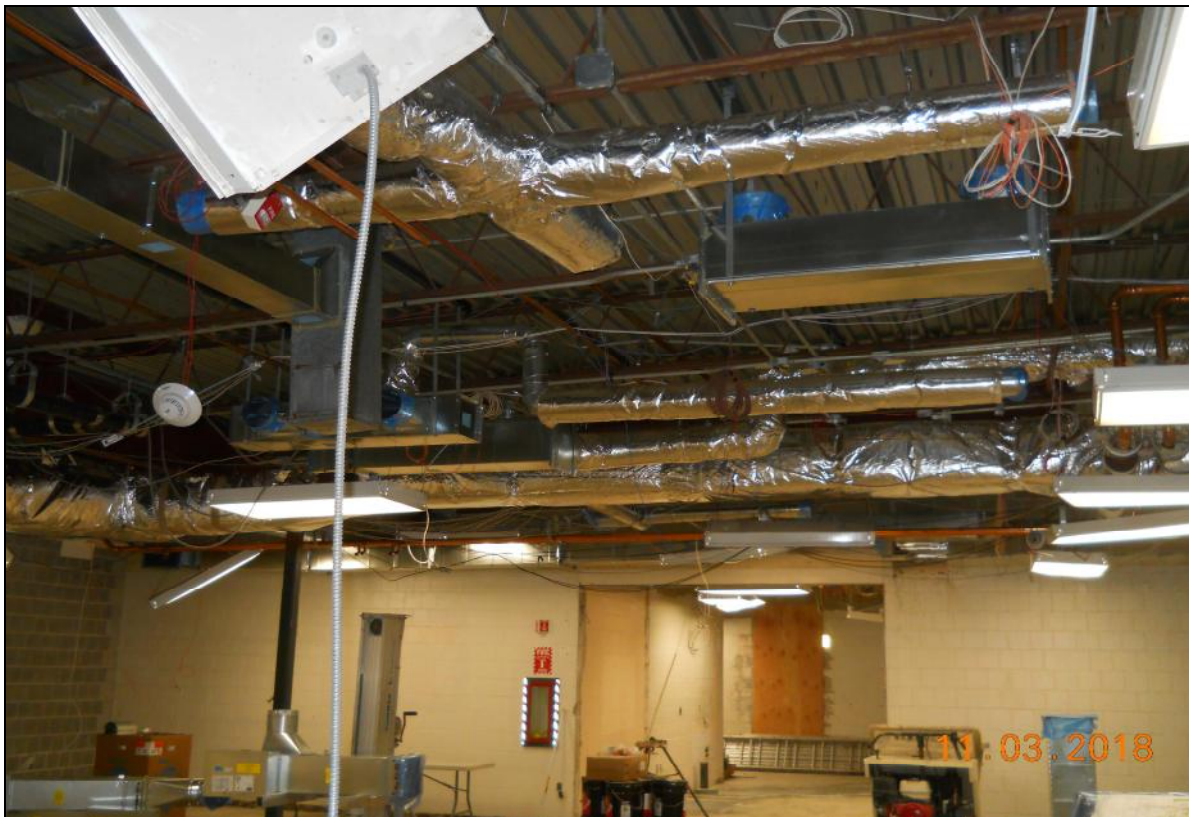
Pinelands Regional Sr. High School 6 Exterior Masonry Wall Installation D-Wing East



Pinelands Regional Sr. High School 6 Exterior Masonry Wall Layout D-Wing East



Pinelands Regional Sr. High School 6 Exterior Masonry Facia Demolition Auditorium



Pinelands Regional Sr. High School 6 New HVAC Ductwork Main Office



Pinelands Regional Sr. High School 6 New HVAC Ductwork GYM



Pinelands Regional Sr. High School 6 Concrete Floor Restoration Prep



Pinelands Regional Sr, High School 6 Main Office Bathroom Concrete Floor Restoration



Pinelands Regional Jr. High School 6 1st Floor Boys / Girls Bathroom Concrete Floor Restoration



Pinelands Regional Jr. High School 6th Floor Boys / Girls Bathroom Sheetrock wall



Pinelands Regional Jr. High School 6th Floor Boys / Girls Bathroom Wall Framing



Pinelands Regional Athletic Field 6 Scoreboard Support Columns



Pinelands Regional Athletic Field 6 Track Base Coat Surface